

Equipment



Model 560 Baking Oven

SPECIFICATIONS/FEATURES

- 24" w x 20" d x 10" h
- 115V, 1700W, 15A
- 3-prong 6' cord supplied
- Flip-up handle standard
- Timer and temperature controlled for uniform baking
- Comes with clean-out tray
- NSF and UL approved



Model 312 Warmer

SPECIFICATIONS/FEATURES

- 18" w x 18" d x 24" h
- 120V, 640W, 5.3A
- 3-prong 5' cord supplied
- Shipping weight – 43 lbs.
- Clear acrylic front and sides
- Optional "Front and Back" doors
- Stainless steel base and insides
- UL approved



Model 326 CART

SPECIFICATIONS/FEATURES

- 65" w x 36" d x 95" h
- 115V, 20A
- 3-prong 6' cord supplied
- Backlit canopy with retractable poles
- Four electrical outlets



The Taste of Fun



Marketing



Table Tent
(5" w x 7" h)



Price Sign
(11" w x 14" h)

Preparation



Oven

Preheat oven to 400°F.
Place frozen product on tray.
Heat in oven for 7 minutes for *ORIGINAL*
and 9 minutes for *FILLED* varieties.
Roll in cinnamon sugar.



Fryer

Preheat fryer to 360°F.
Place frozen product in fryer
for 60 seconds.
Roll in cinnamon sugar.

HANDLING: Keep Frozen (0°F or below). Shelf life up to one year when stored properly.

Let Us Partner in Your Success!



Home of the Original Twisted Churro™

Varieties

CALIFORNIA CHURROS are tasty snacks that can be enjoyed anytime, anywhere! Perfect grab-n-go item for Leisure and Theme/Amusement Parks, or as part of a signature dessert item, CALIFORNIA CHURROS fill the demand for a premium churro, and a versatile menu offering. From QSRs to restaurants, school programs, amusement parks and leisure, CALIFORNIA CHURROS offer convenient, fresh made churros anytime!



Strawberry

Bavarian Crème

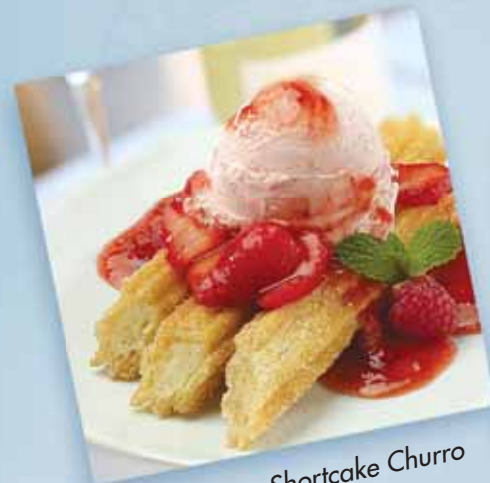
Cajeta (Spanish Caramel)

Original

Product Benefits

- Flour based, cake-like texture
- Hand made, authentic Hispanic Formula
- Premium product
- Long hold time (up to 5 hours)
- Versatile snack, dessert, or anytime item
- Perfect 'signature dessert' menu addition
- Easy to prepare – bake or fry and serve

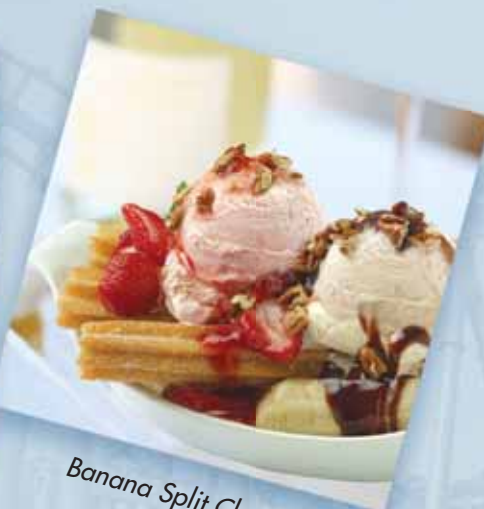
Serving Suggestions



Strawberry Shortcake Churro



Chocolate Mint Churro



Banana Split Churro

Now Available!
Churro Bites!



PRODUCT CODE	PRODUCT DESCRIPTION	UPC CODE	CASE PACK	CASE CUBE	CASE DIMENSIONS (IN)	CASE WEIGHT (LBS)	PALLET COUNT
CALIFORNIA CHURROS ORIGINAL							
40018720	King Size Churros 16"	029141187203	100	1.04	11 5/8 x 9 1/2 x 16 1/4	20.72	64 (16 x 4)
40013720	Regular Size Churros 10"	029141137208	100	0.67	11 5/8 x 9 1/2 x 12 1/4	17.20	96 (16 x 6)
40023510	Regular Size Churros 10"	029141235102	50	0.34	10 1/2 x 9 1/2 x 5 7/8	8.60	176 (16 x 11)
40011830	Mini Size Churros 5"	029141118306	200	0.67	11 5/8 x 9 1/2 x 12 1/4	15.50	96 (16 x 6)
CALIFORNIA CHURROS 50 COUNT REGULAR SIZE FILLED CHURROS 10"							
40023511	Apple	029141235119	50	0.34	10 1/2 x 9 1/2 x 5 7/8	8.60	176 (16 x 11)
40023513	Strawberry	029141235133	50	0.34	10 1/2 x 9 1/2 x 5 7/8	8.60	176 (16 x 11)
40023512	Bavarian	029141235126	50	0.34	10 1/2 x 9 1/2 x 5 7/8	8.60	176 (16 x 11)
40023514	Cajeta	029141235140	50	0.34	10 1/2 x 9 1/2 x 5 7/8	8.60	176 (16 x 11)
CALIFORNIA CHURROS 100 COUNT REGULAR SIZE FILLED CHURROS 10"							
40003721	Apple	029141037218	100	0.67	11 5/8 x 9 1/2 x 12 1/4	17.20	96 (16 x 6)
40003723	Strawberry	029141037232	100	0.67	11 5/8 x 9 1/2 x 12 1/4	17.20	96 (16 x 6)
40013722	Bavarian	029141137222	100	0.67	11 5/8 x 9 1/2 x 12 1/4	17.20	96 (16 x 6)
40013724	Cajeta	029141137246	100	0.67	11 5/8 x 9 1/2 x 12 1/4	17.20	96 (16 x 6)
CALIFORNIA CHURROS Churro Bites							
4185	Churro Bites	073321041854	Approx. 500	0.7	16 x 10 x 7 1/2	14	70 (10 x 7)